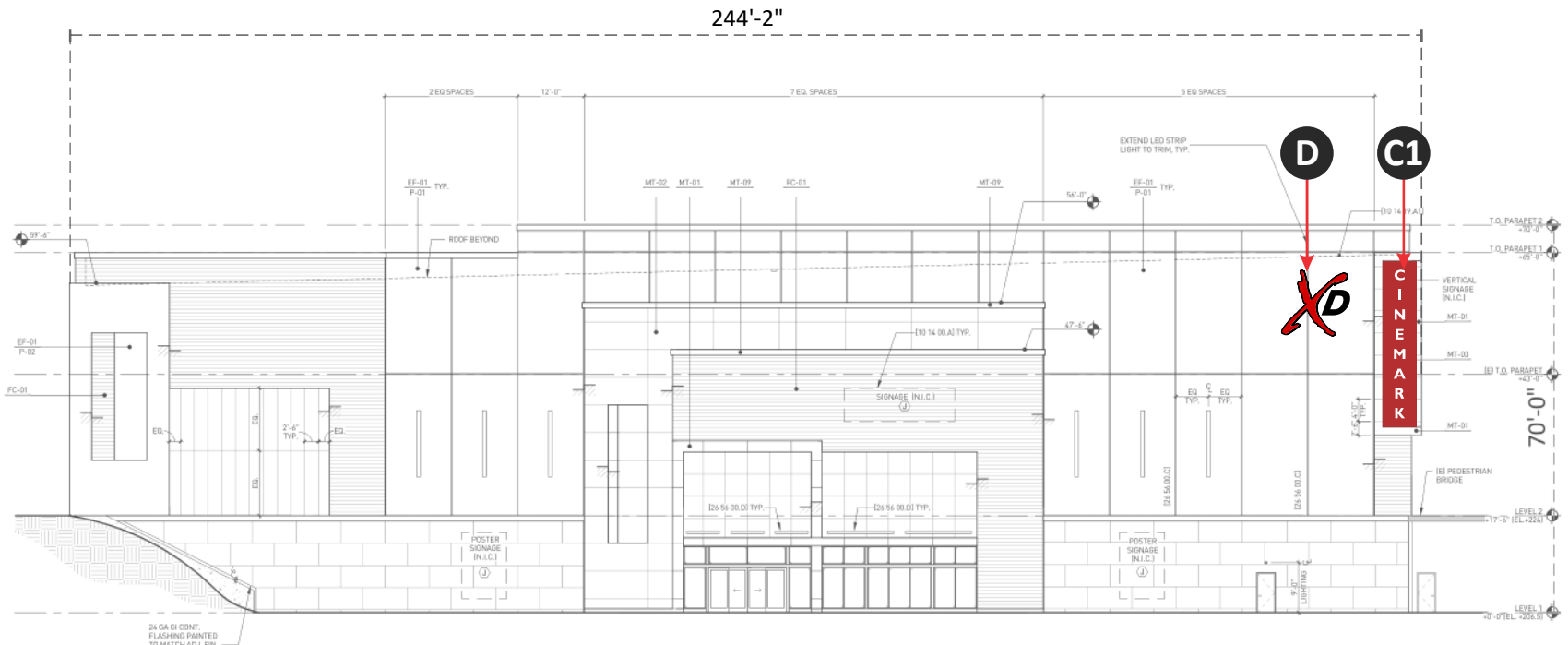
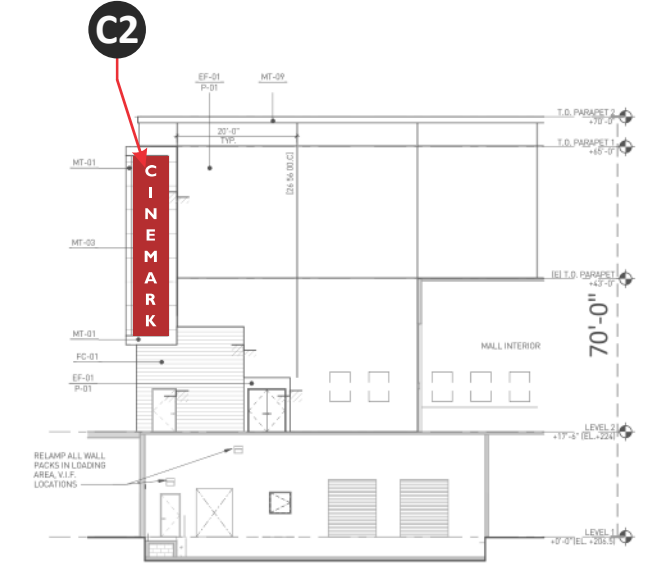


NORTH ELEVATION



WEST ELEVATION



SOUTH ELEVATION

SCALE 1/32" = 1'-0"

| | |
|-------------------------------|--|
| Design # | 0618522AR12 PERMIT |
| Sheet | 2 of 15 |
| Client | Cinemark USA, Inc. |
| Address | 1191 GALLERIA BLVD. ROSEVILLE, CA 95678 |
| Acct. Rep. Coordinator | DEBBIE MOLTZ LAUREN STACKHOUSE |
| Designer | IH |
| Date | 4/23/19 |
| Approval / Date | |
| Client | |
| Sales | |
| Estimating | |
| Art | |
| Engineering | |
| Landlord | |
| Revision/Date | |

R101-1918: Sign A - please show the blue lines and white outline on the "Cinemark Theater" signs. B - please show the blue lines and white outline on the "Cinemark Theater" signs. C - please show the blue lines and white outline on the "Cinemark Theater" signs. D - please show the blue lines and white outline on the "Cinemark Theater" signs. E - please show the blue lines and white outline on the "Cinemark Theater" signs.

R102-1918: Change sign A to "Cinemark" without "Theater". Change sign B to "Cinemark" without "Theater". Change sign C to "Cinemark" without "Theater". Change sign D to "Cinemark" without "Theater". Change sign E to "Cinemark" without "Theater".

R103-1918: Change sign A to "Cinemark" without "Theater". Change sign B to "Cinemark" without "Theater". Change sign C to "Cinemark" without "Theater". Change sign D to "Cinemark" without "Theater". Change sign E to "Cinemark" without "Theater".

R104-1918: Change sign A to "Cinemark" without "Theater". Change sign B to "Cinemark" without "Theater". Change sign C to "Cinemark" without "Theater". Change sign D to "Cinemark" without "Theater". Change sign E to "Cinemark" without "Theater".

R105-1918: Change sign A to "Cinemark" without "Theater". Change sign B to "Cinemark" without "Theater". Change sign C to "Cinemark" without "Theater". Change sign D to "Cinemark" without "Theater". Change sign E to "Cinemark" without "Theater".

chandler signs.com

National Headquarters
 14201 Sovereign Road #101
 Fort Worth, TX 76155
 (214) 902-2000 Fax (214) 902-2044

San Antonio
 17319 San Pedro Ave
 Ste 200
 San Antonio, TX 78232
 (210) 349-3804 Fax (210) 349-8724

West Coast
 3220 Executive Ridge Dr
 Ste 250
 Vista, CA 92081
 (760) 734-1708 Fax (760) 734-3752

Northeast US
 2301 River Road
 Suite 201
 Louisville, KY 40206
 (502) 897-9800 Cell (502) 554-2575

Florida
 2584 Sand Hill Point Circle
 Davenport, FL 33837
 (888) 420-1100 Fax (863) 424-1160

Georgia
 111 Woodstone Place
 Dawsonville, GA 30534
 (678) 725-8852 Fax (210) 349-8724

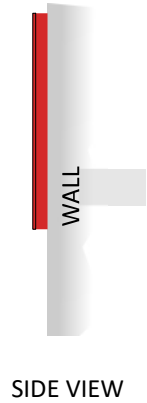
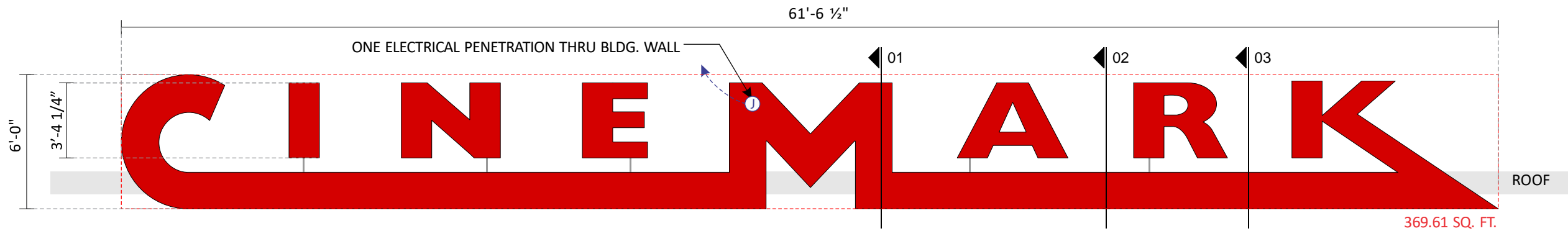
South Texas
 PO BOX 125 206 Doral Drive
 Portland, TX 78374
 (361) 563-5399 Fax (361) 643-6533

This drawing is the property of
 Chandler Signs, LLC
 All rights to its use for reproduction
 are reserved by Chandler Signs, LLC

TITLE 24 COMPLIANT
 State of California

FINAL ELECTRICAL CONNECTION BY CUSTOMER

THIS SIGN IS INTENDED TO BE INSTALLED IN ACCORDANCE WITH ARTICLE 600 OF THE NATIONAL ELECTRICAL CODE AND/OR OTHER APPLICABLE LOCAL CODES. THIS INCLUDES PROPER GROUNDING & BONDING OF THE SIGN. SIGN WILL BEAR UL LABEL(S).



A CM-6.0 SELF-CONTAINED FACE LIT CHANNEL LETTERS

ONE (1) SET REQUIRED - MANUFACTURE AND INSTALL SCALE: 3/16"=1'-0"

MAIN PRIMARY POWER FROM BLDG. WILL FEED THRU THE "M" - ONE ELECTRICAL PENETRATION THRU ELEVATION WALL

L.E.D. LOW VOLTAGE POWER SUPPLIES TO BE LOCATED INSIDE LETTERS - PRIMARY ELECTRICAL POWER FOR THE "I", "N", "E", "A", "R" WILL FEED UP FROM THE MAIN "C-M-K" PART OF THE SIGN, THRU RIGID EMT CONDUIT PAINTED TO MATCH BUILDING - **COLOR T.B.D.**

SEE SECTION DETAILS IN RED SECTION PAGE

SEAL ALL PENETRATIONS WITH NP1.

| | |
|--|-----------------------------------|
| Design # | |
| 0618522AR12 PERMIT | |
| Sheet | 3 of 15 |
| Client | |
| Cinemark USA, Inc. | |
| Address | |
| 1191 GALLERIA BLVD. ROSEVILLE, CA 95678 | |
| Acct. Rep. Coordinator | DEBBIE MOLTZ LAUREN STACKHOUSE |
| Designer | IH |
| Date | 4/23/19 |
| Approval / Date | |
| Client | |
| Sales | |
| Estimating | |
| Art | |
| Engineering | |
| Landlord | |
| Revision/Date | |

R152-19184: Sign A - please show the blue area and white outline on the "Cinemark Theater" text. B - please show the blue area and white outline on the "Cinemark Theater" text. C - please add small red Cinemark over "M" and move them closer to the blank sign per detail below. E - change the primer case dimension to 3" wide x 1" tall.
 R152-19184: Add the walling and gully signs to our package.
 R152-19184: Change F145 to just "Cinemark" without "Theater".
 Change G1 to be a blank box cabinet without letters and just the cabinet returns set to match the sign.
 Change G2 to be a blank box cabinet without letters and just the cabinet returns set to match the sign.
 Change G3 to be a blank box cabinet without letters and just the cabinet returns set to match the sign.
 Change G4 to be a blank box cabinet without letters and just the cabinet returns set to match the sign.
 Change G5 to be a blank box cabinet without letters and just the cabinet returns set to match the sign.
 Change G6 to be a blank box cabinet without letters and just the cabinet returns set to match the sign.
 Change G7 to be a blank box cabinet without letters and just the cabinet returns set to match the sign.
 Change G8 to be a blank box cabinet without letters and just the cabinet returns set to match the sign.
 Change G9 to be a blank box cabinet without letters and just the cabinet returns set to match the sign.
 Change G10 to be a blank box cabinet without letters and just the cabinet returns set to match the sign.
 Change G11 to be a blank box cabinet without letters and just the cabinet returns set to match the sign.
 Change G12 to be a blank box cabinet without letters and just the cabinet returns set to match the sign.
 Change G13 to be a blank box cabinet without letters and just the cabinet returns set to match the sign.
 Change G14 to be a blank box cabinet without letters and just the cabinet returns set to match the sign.
 Change G15 to be a blank box cabinet without letters and just the cabinet returns set to match the sign.
 Change G16 to be a blank box cabinet without letters and just the cabinet returns set to match the sign.
 Change G17 to be a blank box cabinet without letters and just the cabinet returns set to match the sign.
 Change G18 to be a blank box cabinet without letters and just the cabinet returns set to match the sign.
 Change G19 to be a blank box cabinet without letters and just the cabinet returns set to match the sign.
 Change G20 to be a blank box cabinet without letters and just the cabinet returns set to match the sign.
 Change G21 to be a blank box cabinet without letters and just the cabinet returns set to match the sign.
 Change G22 to be a blank box cabinet without letters and just the cabinet returns set to match the sign.
 Change G23 to be a blank box cabinet without letters and just the cabinet returns set to match the sign.
 Change G24 to be a blank box cabinet without letters and just the cabinet returns set to match the sign.
 Change G25 to be a blank box cabinet without letters and just the cabinet returns set to match the sign.
 Change G26 to be a blank box cabinet without letters and just the cabinet returns set to match the sign.
 Change G27 to be a blank box cabinet without letters and just the cabinet returns set to match the sign.
 Change G28 to be a blank box cabinet without letters and just the cabinet returns set to match the sign.
 Change G29 to be a blank box cabinet without letters and just the cabinet returns set to match the sign.
 Change G30 to be a blank box cabinet without letters and just the cabinet returns set to match the sign.
 Change G31 to be a blank box cabinet without letters and just the cabinet returns set to match the sign.
 Change G32 to be a blank box cabinet without letters and just the cabinet returns set to match the sign.
 Change G33 to be a blank box cabinet without letters and just the cabinet returns set to match the sign.
 Change G34 to be a blank box cabinet without letters and just the cabinet returns set to match the sign.
 Change G35 to be a blank box cabinet without letters and just the cabinet returns set to match the sign.
 Change G36 to be a blank box cabinet without letters and just the cabinet returns set to match the sign.
 Change G37 to be a blank box cabinet without letters and just the cabinet returns set to match the sign.
 Change G38 to be a blank box cabinet without letters and just the cabinet returns set to match the sign.
 Change G39 to be a blank box cabinet without letters and just the cabinet returns set to match the sign.
 Change G40 to be a blank box cabinet without letters and just the cabinet returns set to match the sign.
 Change G41 to be a blank box cabinet without letters and just the cabinet returns set to match the sign.
 Change G42 to be a blank box cabinet without letters and just the cabinet returns set to match the sign.
 Change G43 to be a blank box cabinet without letters and just the cabinet returns set to match the sign.
 Change G44 to be a blank box cabinet without letters and just the cabinet returns set to match the sign.
 Change G45 to be a blank box cabinet without letters and just the cabinet returns set to match the sign.
 Change G46 to be a blank box cabinet without letters and just the cabinet returns set to match the sign.
 Change G47 to be a blank box cabinet without letters and just the cabinet returns set to match the sign.
 Change G48 to be a blank box cabinet without letters and just the cabinet returns set to match the sign.
 Change G49 to be a blank box cabinet without letters and just the cabinet returns set to match the sign.
 Change G50 to be a blank box cabinet without letters and just the cabinet returns set to match the sign.
 Change G51 to be a blank box cabinet without letters and just the cabinet returns set to match the sign.
 Change G52 to be a blank box cabinet without letters and just the cabinet returns set to match the sign.
 Change G53 to be a blank box cabinet without letters and just the cabinet returns set to match the sign.
 Change G54 to be a blank box cabinet without letters and just the cabinet returns set to match the sign.
 Change G55 to be a blank box cabinet without letters and just the cabinet returns set to match the sign.
 Change G56 to be a blank box cabinet without letters and just the cabinet returns set to match the sign.
 Change G57 to be a blank box cabinet without letters and just the cabinet returns set to match the sign.
 Change G58 to be a blank box cabinet without letters and just the cabinet returns set to match the sign.
 Change G59 to be a blank box cabinet without letters and just the cabinet returns set to match the sign.
 Change G60 to be a blank box cabinet without letters and just the cabinet returns set to match the sign.
 Change G61 to be a blank box cabinet without letters and just the cabinet returns set to match the sign.
 Change G62 to be a blank box cabinet without letters and just the cabinet returns set to match the sign.
 Change G63 to be a blank box cabinet without letters and just the cabinet returns set to match the sign.
 Change G64 to be a blank box cabinet without letters and just the cabinet returns set to match the sign.
 Change G65 to be a blank box cabinet without letters and just the cabinet returns set to match the sign.
 Change G66 to be a blank box cabinet without letters and just the cabinet returns set to match the sign.
 Change G67 to be a blank box cabinet without letters and just the cabinet returns set to match the sign.
 Change G68 to be a blank box cabinet without letters and just the cabinet returns set to match the sign.
 Change G69 to be a blank box cabinet without letters and just the cabinet returns set to match the sign.
 Change G70 to be a blank box cabinet without letters and just the cabinet returns set to match the sign.
 Change G71 to be a blank box cabinet without letters and just the cabinet returns set to match the sign.
 Change G72 to be a blank box cabinet without letters and just the cabinet returns set to match the sign.
 Change G73 to be a blank box cabinet without letters and just the cabinet returns set to match the sign.
 Change G74 to be a blank box cabinet without letters and just the cabinet returns set to match the sign.
 Change G75 to be a blank box cabinet without letters and just the cabinet returns set to match the sign.
 Change G76 to be a blank box cabinet without letters and just the cabinet returns set to match the sign.
 Change G77 to be a blank box cabinet without letters and just the cabinet returns set to match the sign.
 Change G78 to be a blank box cabinet without letters and just the cabinet returns set to match the sign.
 Change G79 to be a blank box cabinet without letters and just the cabinet returns set to match the sign.
 Change G80 to be a blank box cabinet without letters and just the cabinet returns set to match the sign.
 Change G81 to be a blank box cabinet without letters and just the cabinet returns set to match the sign.
 Change G82 to be a blank box cabinet without letters and just the cabinet returns set to match the sign.
 Change G83 to be a blank box cabinet without letters and just the cabinet returns set to match the sign.
 Change G84 to be a blank box cabinet without letters and just the cabinet returns set to match the sign.
 Change G85 to be a blank box cabinet without letters and just the cabinet returns set to match the sign.
 Change G86 to be a blank box cabinet without letters and just the cabinet returns set to match the sign.
 Change G87 to be a blank box cabinet without letters and just the cabinet returns set to match the sign.
 Change G88 to be a blank box cabinet without letters and just the cabinet returns set to match the sign.
 Change G89 to be a blank box cabinet without letters and just the cabinet returns set to match the sign.
 Change G90 to be a blank box cabinet without letters and just the cabinet returns set to match the sign.
 Change G91 to be a blank box cabinet without letters and just the cabinet returns set to match the sign.
 Change G92 to be a blank box cabinet without letters and just the cabinet returns set to match the sign.
 Change G93 to be a blank box cabinet without letters and just the cabinet returns set to match the sign.
 Change G94 to be a blank box cabinet without letters and just the cabinet returns set to match the sign.
 Change G95 to be a blank box cabinet without letters and just the cabinet returns set to match the sign.
 Change G96 to be a blank box cabinet without letters and just the cabinet returns set to match the sign.
 Change G97 to be a blank box cabinet without letters and just the cabinet returns set to match the sign.
 Change G98 to be a blank box cabinet without letters and just the cabinet returns set to match the sign.
 Change G99 to be a blank box cabinet without letters and just the cabinet returns set to match the sign.
 Change G100 to be a blank box cabinet without letters and just the cabinet returns set to match the sign.



chandler signs.com

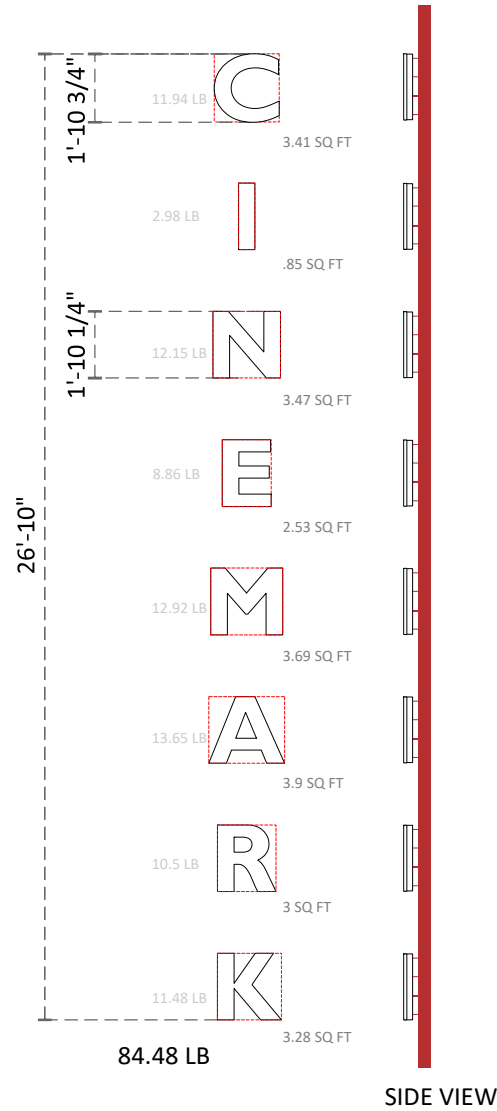
| | |
|------------------------------|--|
| National Headquarters | 14201 Sovereign Road #101 Fort Worth, TX 76155 (214) 902-2000 Fax (214) 902-2044 |
| San Antonio | 17319 San Pedro Ave Ste 200 San Antonio, TX 78232 (210) 349-3854 Fax (210) 349-8724 |
| West Coast | 3220 Executive Ridge Dr Ste 250 Vista, CA 92081 (760) 734-1708 Fax (760) 734-3752 |
| Northeast US | 2301 River Road Suite 201 Louisville, KY 40206 (502) 897-9800 Cell (502) 554-2575 |
| Florida | 2584 Sand Hill Point Circle Davenport, FL 33837 (883) 420-1100 Fax (863) 424-1160 |
| Georgia | 111 Woodstone Place Dawsonville, GA 30534 (678) 725-8852 Fax (210) 349-8724 |
| South Texas | PO BOX 125 206 Doral Drive Portland, TX 78374 (361) 563-5399 Fax (361) 643-6533 |

This drawing is the property of Chandler Signs, LLC. All rights to its use for reproduction are reserved by Chandler Signs, LLC.

TITLE 24 COMPLIANT
State of California

FINAL ELECTRICAL CONNECTION BY CUSTOMER

THIS SIGN IS INTENDED TO BE INSTALLED IN ACCORDANCE WITH ARTICLE 600 OF THE NATIONAL ELECTRICAL CODE AND/OR OTHER APPLICABLE LOCAL CODES. THIS INCLUDES PROPER GROUNDING & BONDING OF THE SIGN. SIGN WILL BEAR UL LABEL(S).



FACE-LIT / BACK LIT CHANNEL LETTERS SCALE: 3/16"=1'-0"
TWO (2) REQUIRED - MANUFACTURE & INSTALL

- 3" DEEP PAINTED **WHITE** ALUM. RETURNS
- 1" TRIMCAPS TO MATCH RETURNS
- 7328 WHITE ACRYLIC FACES
- INTERNALLY ILLUMINATED WITH WHITE LED
- REMOTE POWER SUPPLIES BEHIND WALL/STRUCTURE
- CLEAR BACKS WITH WHITE DIFFUSER
- 2" SPACERS / STAND OFFS P.T.M. BACKGROUND
- 1/4" WEEP HOLE WITH COVERS AT LOWEST PART OF EACH LETTER.

| Design # | |
|--|-------------------|
| 0618522AR12 PERMIT | |
| Sheet | 7 of 15 |
| Client | |
| Cinemark USA, Inc. | |
| Address | |
| 1191 GALLERIA BLVD. ROSEVILLE, CA 95678 | |
| Acct. Rep. | DEBBIE MOLTZ |
| Coordinator | LAUREN STACKHOUSE |
| Designer | IH |
| Date | 4/23/19 |
| Approval / Date | |
| Client | |
| Sales | |
| Estimating | |
| Art | |
| Engineering | |
| Landlord | |

| Revision/Date |
|---|
| R10/1/19(1) Sign A - please show the blue area and white outline on the "Cinemark Theater" text. B - please show the blue area and white outline on the "Cinemark Theater" text and returns. C - please add and install Cinemark logo and move them closer to the black sign per detail below. E - change the letter case dimension to 1" wide x 1" tall. |
| R10/1/19(2) Add the weep holes and grommet signs to our package. |
| R10/1/19(3) - Change F145 to just "Cinemark" without "Theater". Change G1 & H1 to black box cabinets without returns and joint the cabinet returns out to match the faces. |
| - Change dimensions & plans to provide structural & attachment details and requirements for the sign. The sign will be hung from the wall by the use of steel brackets for the sign. CORRECTIONS TO LOGO: SIGN "I" & "R" RED RETURNS. |
| R10/1/19(4) - Add side plan, wall sections, and details from shell drawings. Add A&B's meeting sign & address the details. |
| R10/1/19(5) - Add side plan, wall sections, and details from shell drawings. Add A&B's meeting sign & address the details. |
| R10/1/19(6) - Add side plan, wall sections, and details from shell drawings. Add A&B's meeting sign & address the details. |
| R10/1/19(7) - Add side plan, wall sections, and details from shell drawings. Add A&B's meeting sign & address the details. |
| R10/1/19(8) - Add side plan, wall sections, and details from shell drawings. Add A&B's meeting sign & address the details. |
| R10/1/19(9) - Add side plan, wall sections, and details from shell drawings. Add A&B's meeting sign & address the details. |
| R10/1/19(10) - Add side plan, wall sections, and details from shell drawings. Add A&B's meeting sign & address the details. |
| R10/1/19(11) - Add side plan, wall sections, and details from shell drawings. Add A&B's meeting sign & address the details. |
| R10/1/19(12) - Add side plan, wall sections, and details from shell drawings. Add A&B's meeting sign & address the details. |
| R10/1/19(13) - Add side plan, wall sections, and details from shell drawings. Add A&B's meeting sign & address the details. |
| R10/1/19(14) - Add side plan, wall sections, and details from shell drawings. Add A&B's meeting sign & address the details. |
| R10/1/19(15) - Add side plan, wall sections, and details from shell drawings. Add A&B's meeting sign & address the details. |
| R10/1/19(16) - Add side plan, wall sections, and details from shell drawings. Add A&B's meeting sign & address the details. |
| R10/1/19(17) - Add side plan, wall sections, and details from shell drawings. Add A&B's meeting sign & address the details. |
| R10/1/19(18) - Add side plan, wall sections, and details from shell drawings. Add A&B's meeting sign & address the details. |
| R10/1/19(19) - Add side plan, wall sections, and details from shell drawings. Add A&B's meeting sign & address the details. |
| R10/1/19(20) - Add side plan, wall sections, and details from shell drawings. Add A&B's meeting sign & address the details. |
| R10/1/19(21) - Add side plan, wall sections, and details from shell drawings. Add A&B's meeting sign & address the details. |
| R10/1/19(22) - Add side plan, wall sections, and details from shell drawings. Add A&B's meeting sign & address the details. |
| R10/1/19(23) - Add side plan, wall sections, and details from shell drawings. Add A&B's meeting sign & address the details. |
| R10/1/19(24) - Add side plan, wall sections, and details from shell drawings. Add A&B's meeting sign & address the details. |
| R10/1/19(25) - Add side plan, wall sections, and details from shell drawings. Add A&B's meeting sign & address the details. |
| R10/1/19(26) - Add side plan, wall sections, and details from shell drawings. Add A&B's meeting sign & address the details. |
| R10/1/19(27) - Add side plan, wall sections, and details from shell drawings. Add A&B's meeting sign & address the details. |
| R10/1/19(28) - Add side plan, wall sections, and details from shell drawings. Add A&B's meeting sign & address the details. |
| R10/1/19(29) - Add side plan, wall sections, and details from shell drawings. Add A&B's meeting sign & address the details. |
| R10/1/19(30) - Add side plan, wall sections, and details from shell drawings. Add A&B's meeting sign & address the details. |
| R10/1/19(31) - Add side plan, wall sections, and details from shell drawings. Add A&B's meeting sign & address the details. |
| R10/1/19(32) - Add side plan, wall sections, and details from shell drawings. Add A&B's meeting sign & address the details. |
| R10/1/19(33) - Add side plan, wall sections, and details from shell drawings. Add A&B's meeting sign & address the details. |
| R10/1/19(34) - Add side plan, wall sections, and details from shell drawings. Add A&B's meeting sign & address the details. |
| R10/1/19(35) - Add side plan, wall sections, and details from shell drawings. Add A&B's meeting sign & address the details. |
| R10/1/19(36) - Add side plan, wall sections, and details from shell drawings. Add A&B's meeting sign & address the details. |
| R10/1/19(37) - Add side plan, wall sections, and details from shell drawings. Add A&B's meeting sign & address the details. |
| R10/1/19(38) - Add side plan, wall sections, and details from shell drawings. Add A&B's meeting sign & address the details. |
| R10/1/19(39) - Add side plan, wall sections, and details from shell drawings. Add A&B's meeting sign & address the details. |
| R10/1/19(40) - Add side plan, wall sections, and details from shell drawings. Add A&B's meeting sign & address the details. |
| R10/1/19(41) - Add side plan, wall sections, and details from shell drawings. Add A&B's meeting sign & address the details. |
| R10/1/19(42) - Add side plan, wall sections, and details from shell drawings. Add A&B's meeting sign & address the details. |
| R10/1/19(43) - Add side plan, wall sections, and details from shell drawings. Add A&B's meeting sign & address the details. |
| R10/1/19(44) - Add side plan, wall sections, and details from shell drawings. Add A&B's meeting sign & address the details. |
| R10/1/19(45) - Add side plan, wall sections, and details from shell drawings. Add A&B's meeting sign & address the details. |
| R10/1/19(46) - Add side plan, wall sections, and details from shell drawings. Add A&B's meeting sign & address the details. |
| R10/1/19(47) - Add side plan, wall sections, and details from shell drawings. Add A&B's meeting sign & address the details. |
| R10/1/19(48) - Add side plan, wall sections, and details from shell drawings. Add A&B's meeting sign & address the details. |
| R10/1/19(49) - Add side plan, wall sections, and details from shell drawings. Add A&B's meeting sign & address the details. |
| R10/1/19(50) - Add side plan, wall sections, and details from shell drawings. Add A&B's meeting sign & address the details. |

CHANDLER SIGNS
chandler signs.com

National Headquarters 14201 Sovereign Road #101
Fort Worth, TX 76155
(214) 902-2000 Fax (214) 902-2044

San Antonio 17319 San Pedro Ave
Ste 200
San Antonio, TX 78232
(210) 349-3854 Fax (210) 349-8724

West Coast 3220 Executive Ridge Dr
Ste 250
Vista, CA 92081
(760) 734-1708 Fax (760) 734-3752

Northeast US 2301 River Road
Suite 201
Louisville, KY 40206
(502) 897-9800 Cell (502) 554-2575

Florida 2584 Sand Hill Point Circle
Davenport, FL 33837
(883) 420-1100 Fax (863) 424-1160

Georgia 111 Woodstone Place
Dawsonville, GA 30534
(678) 725-8852 Fax (210) 349-8724

South Texas PO BOX 125 206 Doral Drive
Portland, TX 78374
(361) 563-5399 Fax (361) 643-6533

This drawing is the property of Chandler Signs, LLC. All rights to its use for reproduction are reserved by Chandler Signs, LLC.

TITLE 24 COMPLIANT
State of California

FINAL ELECTRICAL CONNECTION BY CUSTOMER

THIS SIGN IS INTENDED TO BE INSTALLED IN ACCORDANCE WITH ARTICLE 600 OF THE NATIONAL ELECTRICAL CODE AND/OR OTHER APPLICABLE LOCAL CODES. THIS INCLUDES PROPER GROUNDING & BONDING OF THE SIGN. SIGN WILL BEAR UL LABEL(S).

